

Method for Injection Into Span Seal Crack Inducers

Reinforcing by injection of resin into crack inducers

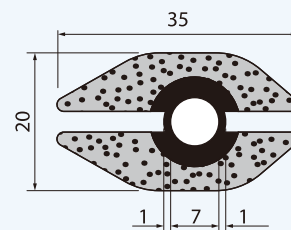
Placing crack inducing joints in steel reinforced concrete structures allows for control of the location of cracks occurring due to thermal stress etc.

On the other hand, when the structure is designed for a two way slab,, and steel reinforcement across the inducing joint is primary reinforcement, the effects of cracks on structural performance cannot be ignored.

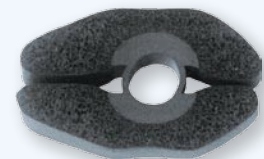
A method was therefore developed to inject resin into cracks occurring in crack inducing joints for the purpose of reinforcement.

Features

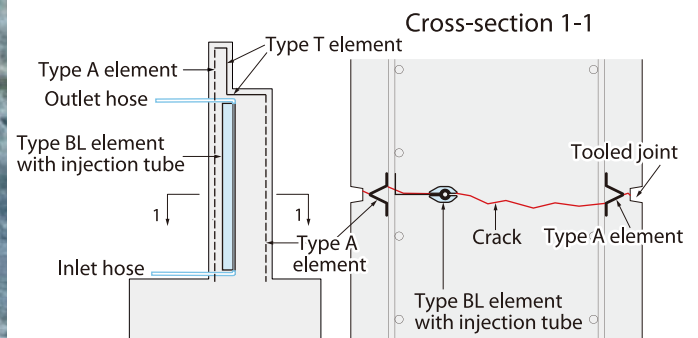
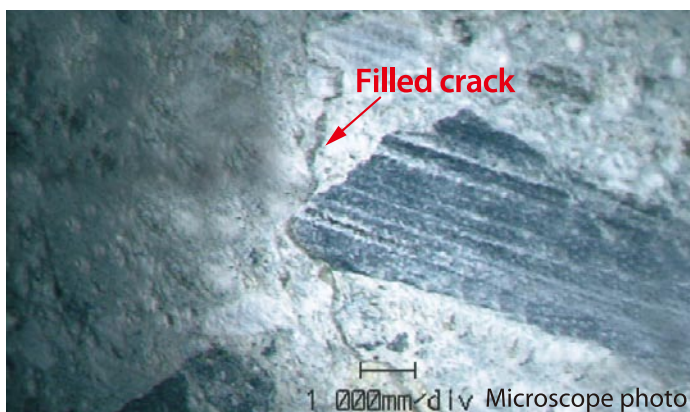
- A special injection tube is fitted to the edge of the type BL element (without Span Seal) of the Span Seal crack inducer, and resin can be injected into cracks as small as 0.2mm in width.
- The special injection tube consists of a solid rubber hose with a notched sponge rubber covering. This sponge rubber layer ensures that the tube does not become blocked when the concrete is poured, and is compressed by the injection pressure forming a resin zone, thus allowing the entire crack to be filled completely.
- The type A element installed in the concrete cover functions as a grout stopper, preventing leakage to the outside.
- Any general resin for crack injection (e.g. epoxy, acrylic, urethane) can be used.



Dimensions



Cross-section of injection tube



Specifications and appearance are liable to change without prior notification due to product improvement.

HAYAKAWA RUBBER CO., LTD.

- Head Office, Minoshima Factory : 5351 Minamioka, Minoshima-cho, Fukuyama, Hiroshima-pref. 721-8540
TEL: +81-84-954-7801 FAX: +81-84-953-2121
- Tokyo office : 1-16-10 Saga, Koto-ku, Tokyo, 135-0031
TEL: +81-3-3642-1180 FAX: +81-3-3643-6288
- Osaka office : 12-8 Hiroshiba-cho, Suita, Osaka-pref. 564-0052
TEL: +81-6-6386-6531 FAX: +81-6-6380-0670
- Sendai office : Oroshimachi Saiki Bldg., 5-2-10 Oroshi-machi, Wakabayashi-ku, Sendai, Miyagi-pref. 984-0015
TEL: +81-22-353-6235 FAX: +81-22-232-2033
- Nagoya office : Chubu shikaku Bldg., 1-2-22 Nishiki, Naka-ku, Nagoya, Aichi-pref. 460-0003
TEL: +81-52-211-3444 FAX: +81-52-211-5053
- Fukuyama office : 5351 Minamioka, Minoshima-cho, Fukuyama, Hiroshima-pref. 721-8540
TEL: +81-84-954-7801 FAX: +81-84-953-2121
- Fukuoka office : Dai-ni Matsuwaka Bldg., 1-18-6 Shimizu, Minami-ku, Fukuoka, Fukuoka-pref. 815-0031
TEL: +81-92-511-3914 FAX: +81-92-511-3947

Address your inquiries and others to:

